

# GRUNDIG

## Ionic Hair Dryer

User Manual



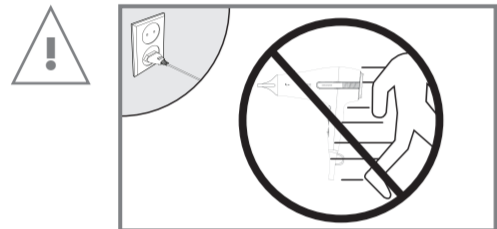
HD 8680

EN - TR

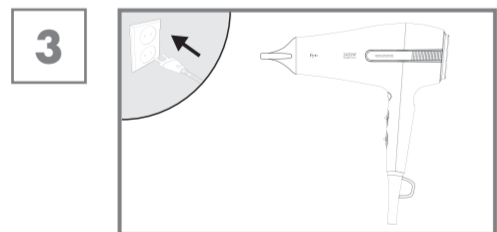
Arçelik A.Ş. Karasağaç Caddesi No:2-6,  
34445, Söğütçe, İstanbul, Türkiye  
www.grundig.com.tr  
01M-8910371600-5320-02



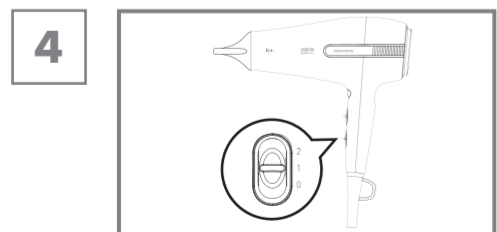
Dry the hair / Saç kurutma



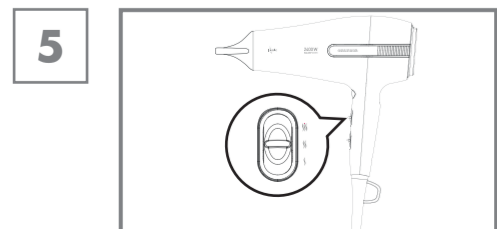
Align the concentrator nozzle / Yoğunlaştırıcı nozulu hizalayın



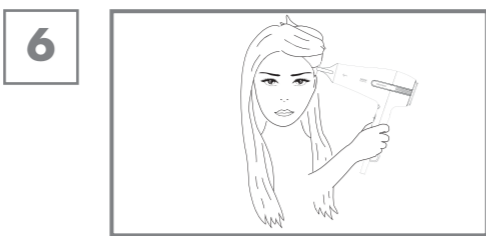
Connect / Prizle takın



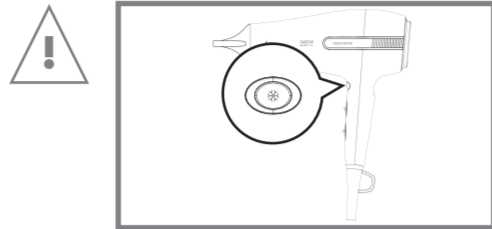
Switch on /off and select air flow level / Açma/  
Kapama tuşuna basın ve fan seviyesi seçin



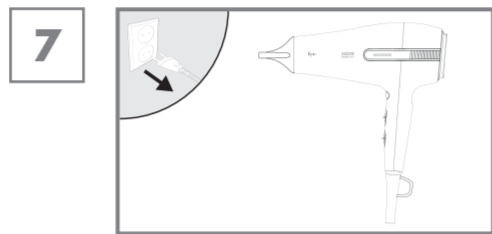
Select temperature level (low, medium, high) /  
Sıcaklık seviyesi seçin (soğuk, orta, yüksek)



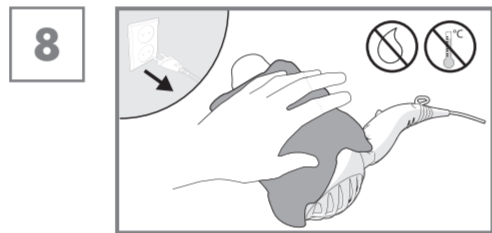
Dry the hair / Saç kurutun



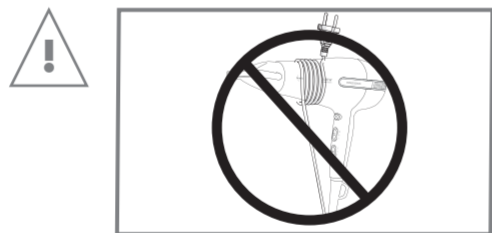
Press Cool Shot to fix the hairstyle / Saç şeklini sabitlemek için soğuk darbe tuşuna basın



Switch off and pull the power cord / Kapatın ve Elektrik kablosunu çekin



Cleaning device / Cihazın temizlenmesi



## SAFETY EN

Please note the following information when using the appliance:

- The appliance is designed for domestic use only.
- Never use the appliance in the bath, shower or over a washbasin filled with water; nor should it be operated with wet hands.



- Do not immerse the appliance in water or let it come into contact with water, even during cleaning.
- If the appliance is used in the bath-

room, it is essential that you unplug it after use, as any water close to the appliance can still pose a hazard, even if the appliance is switched off.

- Do not use the appliance near water in bathtubs, wash basins or other vessels.
- If not already in use, installing a residual current-operated protective device (RCD) is recommended for additional protection with a rated residual operating current not exceeding 30 mA in the electrical circuit of your bathroom. Ask your plumber for advice.
- Never place the appliance on soft cushions or blankets during operation.

- Ensure that the air-induction and output openings are not covered during operation.
- The appliance is equipped with an overheating protection system.
- Unplug the appliance after use. Do not disconnect the plug by pulling on the cord.
- Never use the appliance if it or the power cord is visibly damaged.
- If the power cord is damaged, it must be replaced by the manufacturer, a service centre or a similarly qualified person to avoid any danger of electrical shock.
- Keep the appliance out of the reach of children.

- This appliance can be used by children aged from 8 years and above and persons with reduced physical, sensory or mental capabilities or lack of experience and knowledge if they have been given supervision or instruction concerning use of the appliance in a safe way and understand the hazards involved. Children shall not play with the appliance. Cleaning and user maintenance shall not be made by children without supervision.
- Never open the appliance under any circumstance. No warranty claims are accepted for damage caused by improper handling.
- Check if the mains voltage on the type plate corresponds to your

local mains supply. The only way to disconnect the appliance from the mains is to unplug it.

- Never wrap the power cord around the appliance.
- Never use the appliance in or near to combustible, inflammable places and materials and furniture. Do not let the appliance come into contact with or become covered by inflammable materials e.g. curtains, textiles, walls, etc. Please make sure that the appliance is always kept a safe distance away from flammable materials and furniture.
- The nozzle becomes very hot during use. Do not touch it with your bare hands. Avoid any contact of the skin

with the hot parts. Do not allow the nozzle to come into contact with your face, neck or head.

- A warm flow of air is required to achieve a perfect result. Please note that a metallised brush can become extremely hot during prolonged or intensive use. To avoid injury, please adjust the usage time of the appliance to the accessory being used.

## AT A GLANCE

Dear Customer,

congratulations on purchasing the GRUNDIG Ionic Hair Dryer HD 8680.

Read the following user notes carefully to ensure full enjoyment of your quality Grundig product for many years to come.

## A responsible approach!



GRUNDIG focuses on contractually agreed social working conditions with fair wages for both internal employees and suppliers. We

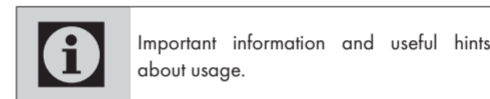
also attach great importance to the efficient use of raw materials with continuous waste reduction of several tonnes of plastic every year. Furthermore, all our accessories are available for at least 5 years.

For a future worth living.

Grundig.

## Meanings of the symbols

Following symbols are used in various sections of this manual:



It does not contain PCB.

## INFORMATION

### Cleaning and care

- 1 Switch off the appliance with the button and unplug power cord from the wall socket.
- 2 Clean the appliance only with a damp, soft cloth. Clean the air inlet grille occasionally with a soft brush to remove hairs and dust. Take off the air inlet grille and clean the filter at regular intervals. Pull back the grille to do this.

### Storage

Store the appliance carefully if you do not want to use it for a long time.

- 1 Make sure it is unplugged, has completely cooled down and is completely dry.
- 2 Store it in its original box in a cool, dry place. Do not wind the power cord around the appliance.
- 3 Make sure the appliance is kept out of reach of children.

### Tips for energy saving

Turn off and unplug the appliance after each use.

### Compliance with the WEEE Directive and Disposing of the Waste Product:

This product complies with EU WEEE Directive (2012/19/

EU). This product bears a classification symbol for waste electrical and electronic equipment (WEEE).

This symbol indicates that this product shall not be disposed with other household wastes at the end of its service life. Used device must be returned to official collection point for recycling of electrical and electronic devices. To find these collection systems please contact to your local authorities or retailer where the product was purchased. Each household performs important role in recovering and recycling of old appliance. Appropriate disposal of used appliance helps prevent potential negative consequences for the environment and human health.

### Compliance with RoHS Directive

The product you have purchased complies with EU RoHS Directive (2011/65/EU). It does not contain harmful and prohibited materials specified in the Directive.

### Package information

Packaging materials of the product are manufactured from recyclable materials in accordance with our National Environment Regulations. Do not dispose of the packaging materials together with the domestic or other wastes. Take them to the packaging material collection points designated by the local authorities.

## Technical data

Power supply: 230-240 V ~, 50Hz

Power: 2200-2400 W

Electrical insulation class: II

Technical and design modifications reserved!

## GÜVENLİK

TR

Cihazı kullanırken lütfen aşağıdaki bilgilere dikkat edin:

- Bu cihaz yalnızca evde kullanım için tasarlanmıştır.
- Cihazı banyoda, duşta ya da suyla dolu küvet üzerinde asla kullanmayın; ayrıca cihaz, ıslak ellerle de kullanılmamalıdır.



- Cihazı temizleme sırasında bile suya sokmayın ve suyla temas etmesine izin vermeyin.
- Cihaz banyoda kullanılmışsa, kullandıktan sonra fişi çekilmelidir. Çünkü cihaza yakın yerde su bulunması, cihaz kapalı olsa da tehlike yaratabilir.
- Cihazı banyo küveti, lavabo veya diğer kaplardaki suların yakınında kullanmayın.
- Cihaz kullanılmadığı zamanlarda ek koruma sağlamak amacıyla, banyonuzdaki elektrik tesisatı üzerinde artık akımla çalışan ve 30 mA'yi geçmeyen bir akım koruyucu aygıtla (RCD) korunması tavsiye edilir. Öneri için ehliyetli bir elektrikçiye başvurun.

- Cihazı kullanırken asla yumuşak minder veya battaniye üzerine koymayın.
- Kullanım sırasında hava giriş ve çıkış açıklıklarının kapanmadığından emin olun.
- Cihaz aşırı ısınma koruma sistemine sahiptir.
- Cihazı kullandıktan sonra elektrik fişini prizden çekin. Cihazın fişini kablosundan çekerek çıkarmayın.
- Cihazda veya elektrik kablosunda gözle görülür hasar mevcutsa, cihazı asla kullanmayın.
- Elektrik kablosu hasar görmüşse, elektrik çarpması riskini önlemek için üretici, yetkili servis merkezi

veya benzer bir yetkili kişi tarafından değiştirilmelidir.

- Cihazı çocukların erişemeyecekleri bir yerde saklayın.
- Bu cihaz, cihazın güvenli bir şekilde kullanımıyla ilgili olarak gözetim altında tutulmaları veya kendilerine talimat verilmesi ve cihazın kullanımıyla ilgili tehlikeleri anlamaları koşuluyla 8 yaş ve üzeri çocuklar ile kısıtlı fiziksel, duyuşsal veya zihinsel kapasiteye sahip olan ya da bilgi ve deneyimi olmayan kişilerce kullanılabilir. Çocuklar cihazla oynamamalıdır. Temizlik ve kullanıcı bakım işlemleri, başlarında bir büyük olmadığı sürece çocuklar tarafından yapılmamalıdır.

